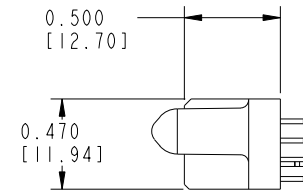
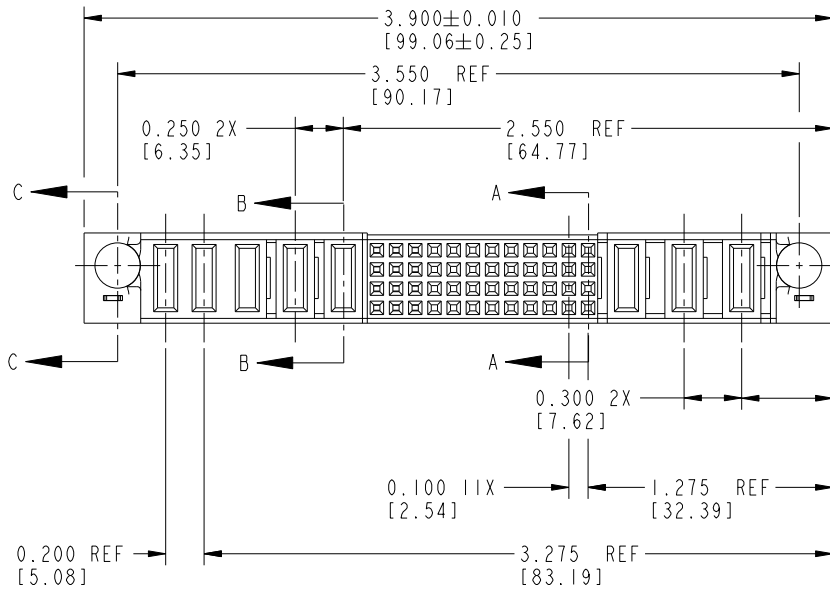
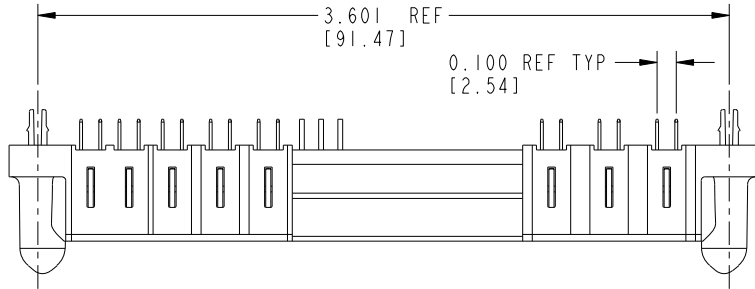


Tous droits strictement réservés. Reproduction ou communication a des tiers interdite sous quelque forme que ce soit sans autorisation écrite du propriétaire. Propriété de c FCI. Droits de reproduction FCI.

All rights strictly reserved. Reproduction or issue to third parties in any form whatever is not permitted without written authority from the proprietor. Property of FCI. Copyright FCI.



PRODUCT No.	ROWS	POWER					SIGNAL										POWER			E1			
		E2	P8	P7	P6	P5	P4	12	11	10	9	8	7	6	5	4	3	2	1		P3	P2	P1
51784-002-- NOTE: ③	D C B A	HA	PA	PA	PA	PD	PD	E	E	E	X	X	X	X	X	X	X	X	X	PD	PD	PA	HA



CODE	DIM "M" ±.010 [0.25]	CONTACT TYPE
PA	0.042 [1.07]	POWER
PD	0.092 [2.34]	POWER
HA	N/A [N/A]	HOLD-DOWN
E	N/A [N/A]	SIGNAL
X	OMITTED	OMITTED

mat'l code				SEE NOTES		tolerances unless otherwise specified	
ltr	ecn no.	dr	date	linear	angles		
A	V12259	JRW	9/28/01	.XX±.01/0.X±0.3			
B	DG05-0217	SJ	07/11/05	.XXX±.005/0.XX±0.13			
C	DG08-0251	W D	09/15/08	.XXX±.0020/.XXX±.051	0°±2°		
				dr	J. WITMER	9/28/01	
				enrg	J. ALLISON	9/28/01	
				chr	J. ALLISON	9/28/01	
				appd	J. ALLISON	9/28/01	
sheet index	revision sheet	C	C	C	C	C	C
		1	2	3			

CUSTOMER		FCI	
COPY		www.fciconnect.com	
projection	title	3ACP + 48S + 5P VERTICAL SOLDER TAIL RECEPTACLE	
INCH/MM	product family	PwrBlade	
scale	size	dwg no	code
1:1	A	51784-002	213
			sheet 1 of 3

A

A

B

B

1 | 2

Pro/E

PDM: Rev: C

STATUS: Released

Printed: Sep 21, 2008

cage code 28536

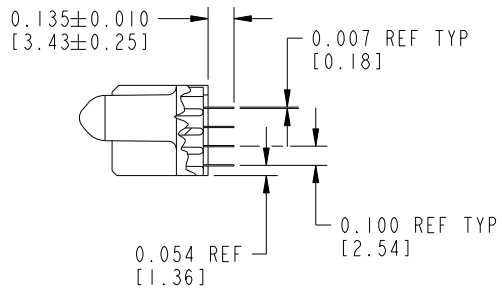
4

Tous droits strictement réservés. Reproduction ou communication a des tiers interdite sous quelque forme que ce soit sans autorisation écrite du propriétaire. Propriété de c FCI. Droits de reproduction FCI.

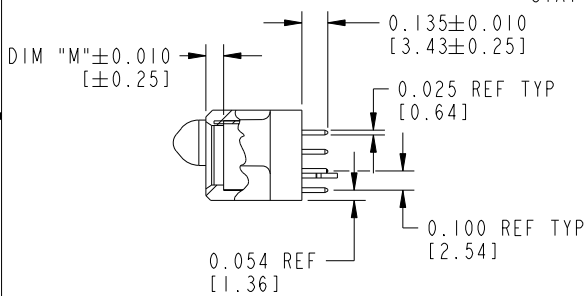
All rights strictly reserved. Reproduction or issue to third parties in any form whatever is not permitted without written authority from the proprietor. Property of FCI. Copyright FCI.



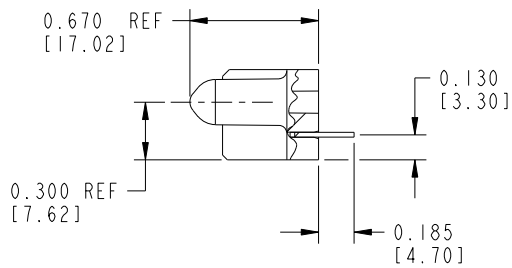
PRODUCT NUMBER
51784-002--
NOTE: ③



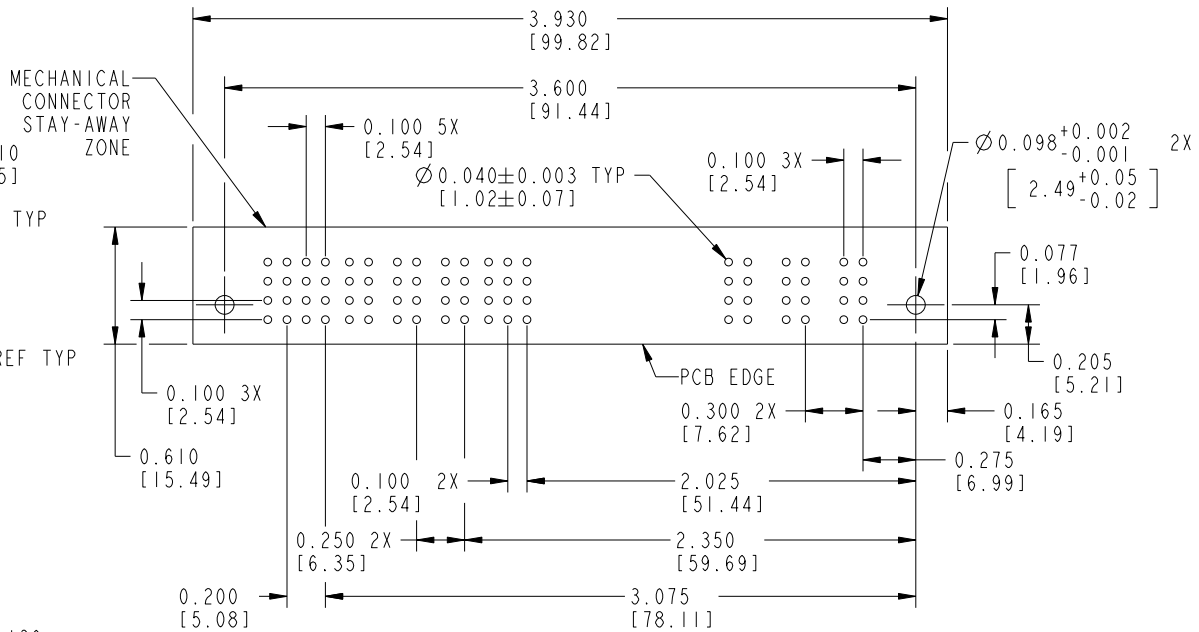
SECTION A-A



SECTION B-B



SECTION C-C



RECOMMENDED PCB LAYOUT

mat'l code		SEE NOTES		tolerances unless otherwise specified		CUSTOMER		FCI		www.fciconnect.com	
ltr	ecn no.	dr	date	linear	.XX±.01/0.X±0.3	COPY		projection		title	
c				angles	.XXX±.005/0.XX±0.13	⊕		⊕		3ACP + 48S + 5P	
				dr	.XXX±.0020/.XXX±.051	INCH/MM		product family		PwrBlade	
				enrg	0°±2°	1:1		size		213	
				chr				dwg no		sheet	
				appd				51784-002		2	
sheet index	revision sheet										



1 | 2

3 |

4

PRODUCT NUMBER
51784-002--
NOTE: ③

CONNECTOR NOTES:

1. HOUSING MATERIAL: UL 94 V-0 GLASS FILLED HIGH TEMP THERMOPLASTIC
POWER CONTACT MATERIAL: COPPER ALLOY
SIGNAL CONTACT MATERIAL: COPPER ALLOY

2. "MANUFACTURER" NAME, P/N, AND DATE CODE TO APPEAR ON THIS SURFACE

③ 3. SEE ITEM 5 & 6 IN PRINT 10064183 FOR PLATING SPEC OF 51784-002 AND 51784-002LF RESPECTIVELY.

4. PRODUCT SPECIFICATION GS-12-149

PCB NOTES:

5. ALL DIMENSIONS ARE BASIC UNLESS OTHERWISE SPECIFIED.

6. ALL THROUGH HOLES ARE LOCATED WITH A TRUE POSITION OF 0.004 [0.10]

7. ALL HOLE DIAMETERS ARE FINISHED HOLE SIZE

8. Ø0.098 THROUGH HOLES ARE UNPLATED.

9. Ø0.0453±0.0010 [1.151±0.025] DRILLED HOLES PLATED WITH 0.0003 [0.008] MIN SnPb OVER 0.001 [0.03] TO 0.003 [0.08] Cu PLATING TO ACHIEVE A Ø0.040 HOLE.

10. A ③ SYMBOL WILL BE NEXT TO ANY DIMENSION, VIEW, OR NOTE WHICH HAS BEEN MODIFIED WITH THE CURRENT DRAWING REVISION.

CONFIDENTIAL

mat'l code		NOTES		tolerances unless otherwise specified		CUSTOMER		FCI	
ltr	ecn no.	dr	date	linear	.XX±.01/0.XX±0.3	COPY		www.fciconnect.com	
c				linear	.XXX±.005/0.XX±0.13	projection		title	
				angles	.XXX±.0020/.XXX±.051			3ACP + 48S + 5P	
					0°±2°			VERTICAL SOLDER TAIL RECEPTACLE	
		dr	J. WITMER 9/28/01			INCH/MM		product family PwrBlade code	
		enr	J. ALLISON 9/28/01			scale		size dwg no	
		chr	J. ALLISON 9/28/01			1:1		A 51784-002 213	
		appd	J. ALLISON 9/28/01					sheet 3	
sheet index	revision sheet								

1 | 2

Pro/E

PDM: Rev: C

STATUS: Released

Printed: Sep 21, 2008

A

A

B

B